

# BALANCED LINE DRIVER 1.0

## Symmetric XLR-Connection

### OVERVIEW

This is a must-have for your pedalboard if you are gigging or recording. The balanced line driver will convert your unbalanced line signal (from your effects) into a symmetric signal (into your PA) to allow direct mixing and recording.

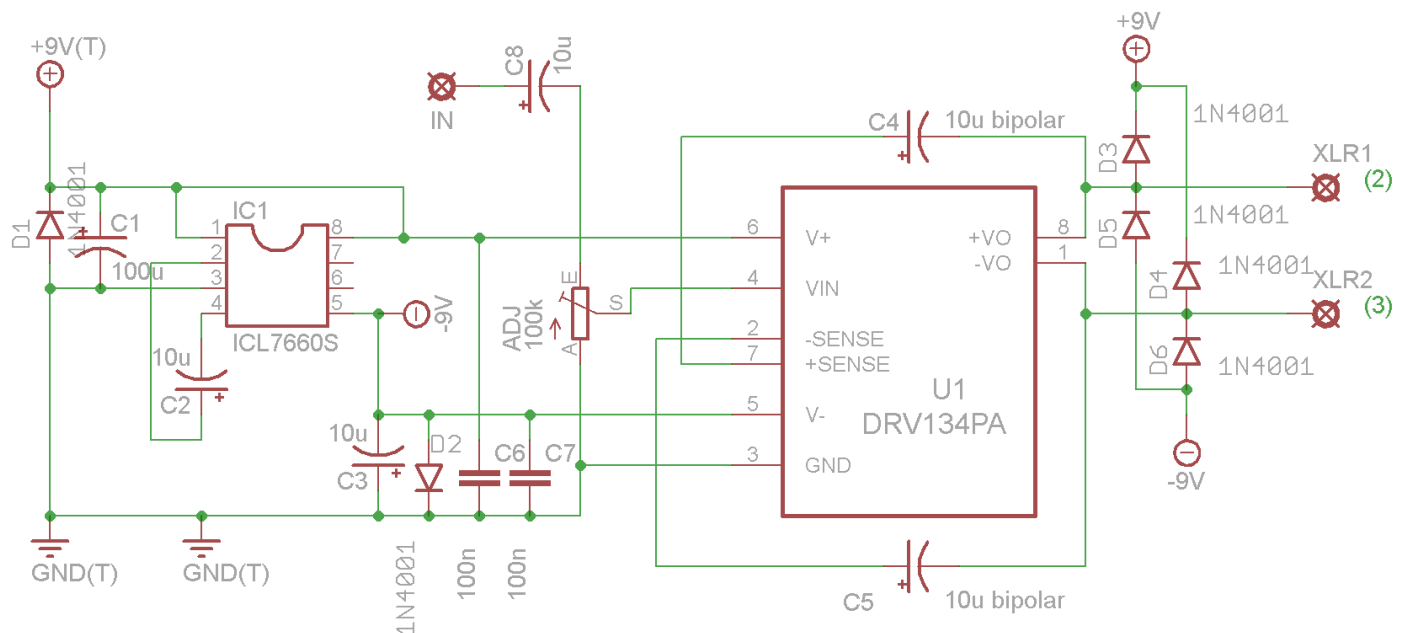
### GENERAL

The circuit creates its own split rail power supply from your standard +9V and uses a line driver IC for best signal performance. You can use the former DRV134 IC or the newer THAT 1646. It has protection against phantom power.

The board has four mounting holes to be used with standoffs which allow you to fix it inside existing enclosures easily.

### SCHEMATIC

Balanced Line Driver  
with dual power rail  
V1.0  
(c) 12/2013 TH custom effects

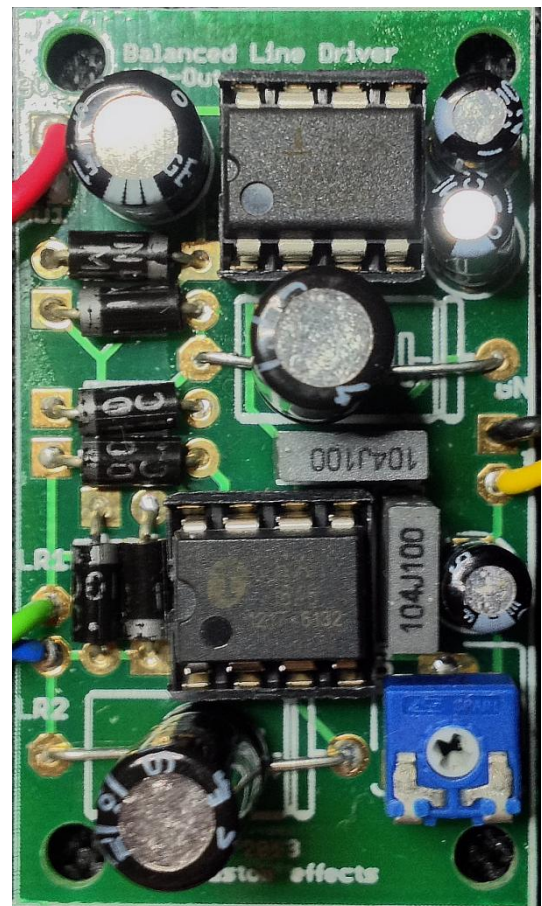
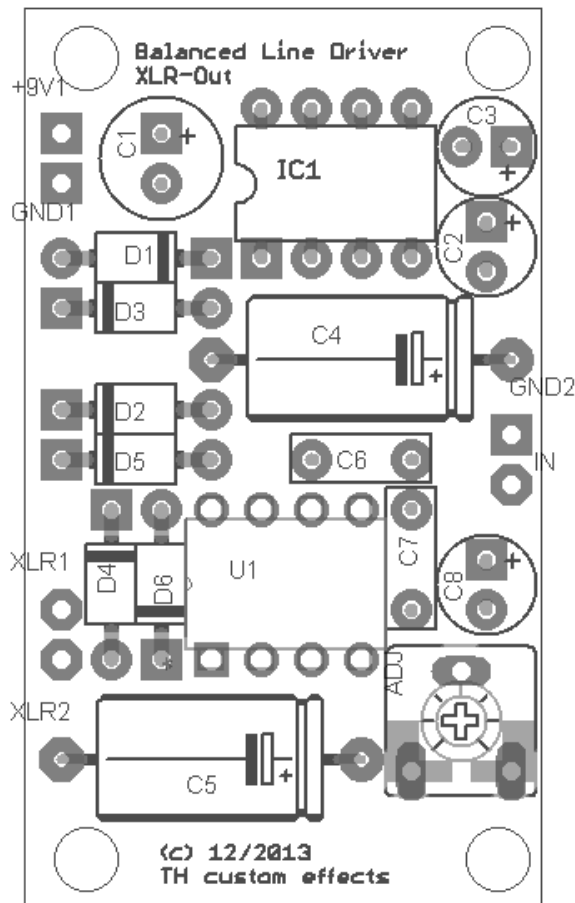


## BILL OF MATERIALS

	Device#	Qty	Value	Comment
Capacitors	C1	1	100u	polarized electro
	C3, C2, C8	3	10uF	polarized electro
	C4, C5	2	10uF	bipolar electro (axial max 12x8mm) 35V or 63V alternatively use radial version.
	C6, C7	2	100n	box film
Pots	ADJ	1	100k	6mm trim pot
Diodes	D1-D6	6	1n4001	
	ICs	1	ICL7660SCPA	<a href="#">Mouser Link</a>
	U1	1	THAT 1646	or DRV 134 <a href="#">Mouser Link</a>

## BUILDING

Start populating diodes first, then IC sockets, trimpot and capacitors.



## FINALLY

If you use it as a separate unit or within an existing box is just a matter of your personal preference.

## DISCLAIMER & LICENSE

PCBs purchased from TH custom effects are intended for DIY / non-commercial use only. It is not allowed to redistribute the PCBs and artwork from this document. However, you can use these instructions and PCBs to build and sell your own product based on PCBs ordered from TH custom effects.