

# JENNY GREENTEETH V1.0

## Weird Chorus /Putchbend / Ringmod

based on Merlin Blencowe's circuit

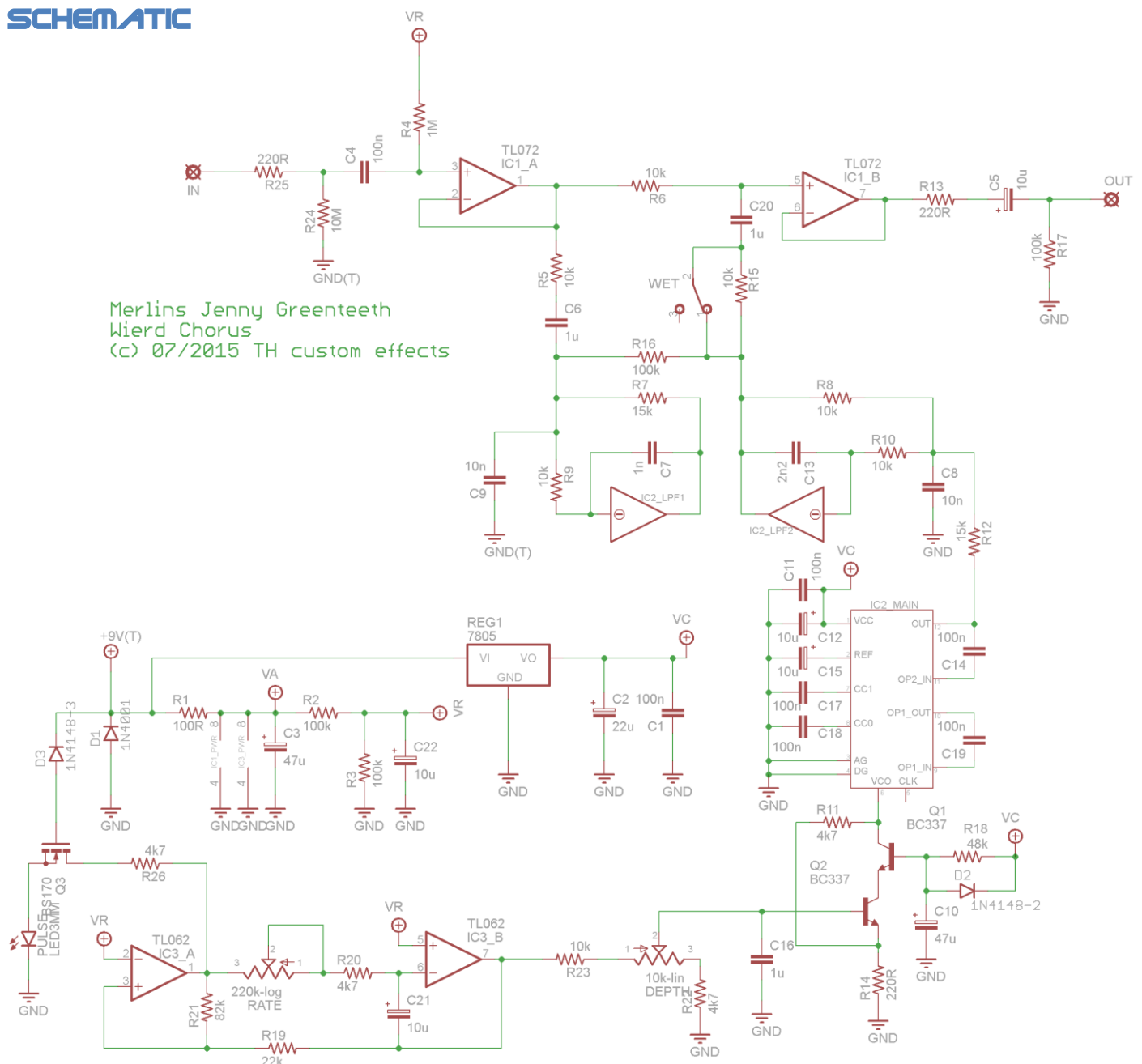
## OVERVIEW

Merlin is famous for his knowledge about valve circuits. But from time to time he releases stompbox circuits after his own ideas. His site: <http://www.valvewizard.co.uk/>

# GENERAL

Jenny G. is a slow chorus with a lot of weird sounds available. Please see Merlins detailed description on his website. Here is Merlins project page: <http://www.valvewizard.co.uk/jennygreenteeth.html>

## SCHEMATIC



## BILL OF MATERIALS

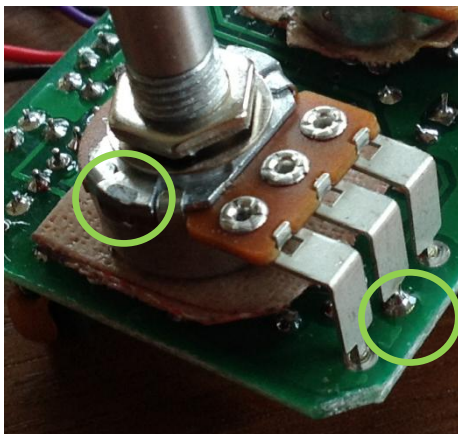
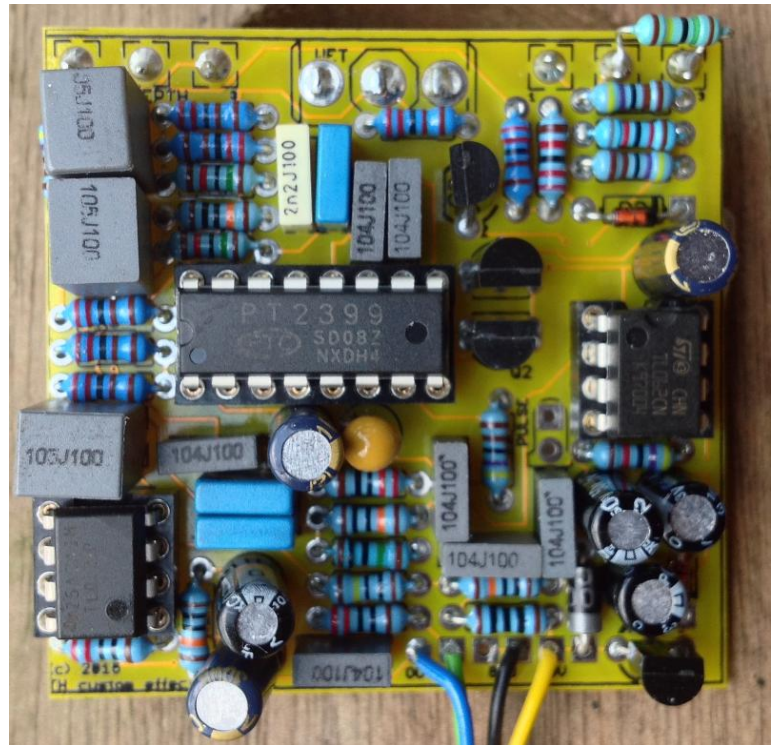
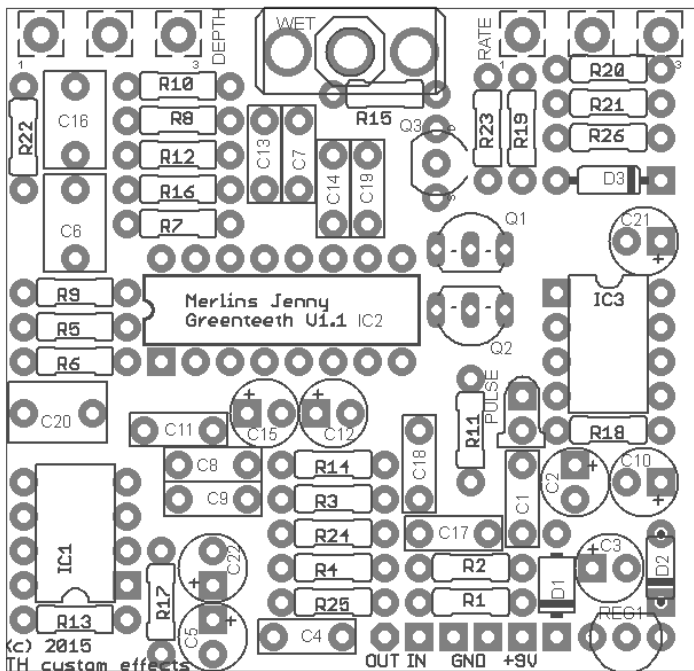
	Device#	Qty	Value	Comment
<b>Resistors</b>	R1	1	100R	
	R2, R3, R16, R17	4	100k	
	R4	1	1M	
	R5, R6, R8, R9, R10, R15, R23	7	10k	
	R7, R12	2	15k	
	R11, R20, R22, R26,	4	4k7	
	R13, R14, R25,	3	220R	
	R18	1	47k	
	R19	1	22k	
	R21	1	82k	
	R24	1	10M	
<b>Capacitors</b>	C1, C4, C11, C14, C17, C18, C19	7	100n	box film
	C2, C22	2	22u	polarized electro
	C3, C10	2	47u	polarized electro
	C5, C15	2	10u	polarized electro
	C6, C16, C20	3	1u	box film
	C7	1	1n	box film
	C8, C9	2	10n	box film
	C12	1	10u	Tantalum
	C13	1	2n2	box film
	C21	1	10u	non polarized electro (preferred)
<b>Pots</b>	RATE	2	220k-log	
	DEPTH	2	10k-lin	
<b>Diodes</b>	D1	1	1N4001	
	D2,D3	2	1N4148	
	PULSE	1	LED	of your choice
<b>Transistors</b>	Q1, Q2	2	BC337	
	Q3	1	BS170	
<b>Switches</b>	WET	1	1PDT	
<b>ICs</b>	IC1	1	TL072	
	IC2	1	PT2399	
	IC3	1	TL062	
	REG1	1	78L05	

## BUILDING

There are a lot of parts on relatively small space, so take your time and everything will work out well.

Start populating resistors and diodes first, then IC sockets. If you want to socket the transistors you put the sockets in now. Next do the capacitors, starting ceramic, box film and last 1u box film and pol. electros.

The rate pulse LED is not needed for the function of the circuit, so you could leave it off.



The board mounted pots need to go onto the other side of the board. Use some (double-sided) tape to make sure the pot cases do not shorten any pins that come through the board. As you solder them it is good practice to apply some solder to the middle pin first, then pull it back approx. 1mm and let it harden. Then solder the other pins. This will align the pot horizontally in a better way and avoid shortcuts of the wide pot pins and the board.

Don't forget to clip of the small bracket before you mount the circuit.

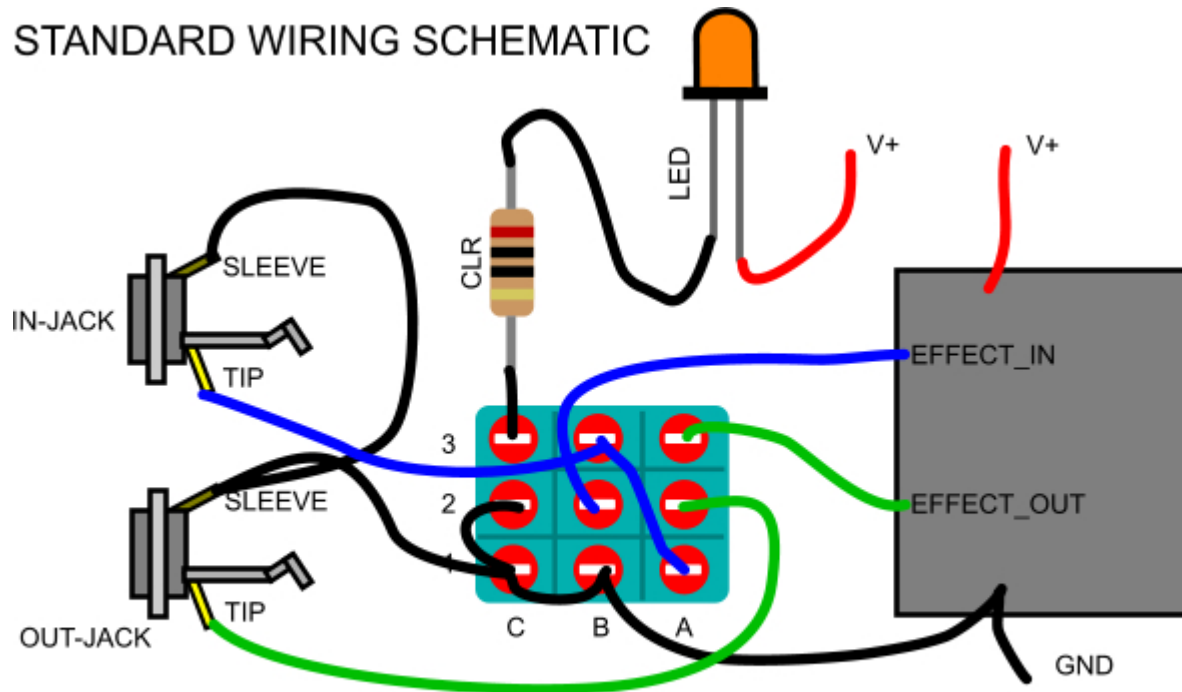
## FINALLY

This circuit is a great addition for those who like special sounds. Have fun playing with it!

## DISCLAIMER & LICENSE

PCBs purchased from TH custom effects are intended for DIY / non-commercial use only. It is not allowed to redistribute the PCBs and artwork from this document. However, you can use these instructions and PCBs to build and sell your own product based on PCBs ordered from TH custom effects.

# STANDARD WIRING SCHEMATIC



(c) 2014 TH custom effects.  
It is forbidden to use this content outside of thcustom.com.